

PPM-27006500

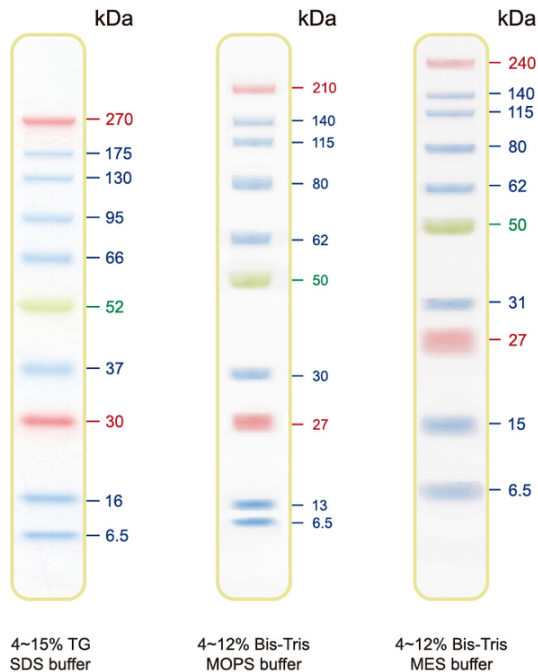


Prestained Protein Marker (6.5-270 kDa)

Storage: Stable for up to 2 weeks at 25°C or 3 months at 4°C.
For long term storage, store at -20°C.

Description:

The EBL Prestain Protein Marker is designed for visualization of protein molecular of Western transfer efficiency. The prestain marker consists of 10 prestained proteins covering the range 6.5-270kDa. Proteins are covalently coupled to A blue dye, except the fourth protein band from the top is coupled To a green dye, the eighth protein band from the top is coupled A red dye. A 5 μ l of EBL Prestain Protein Marker resolves 10 bands in 4-20% SDS-PAGE (Tris-glycine buffer) and after Western blotting to PVDF membrane.



揚積生物科技有限公司

EBL Biotechnology Co., Ltd.

TEL: (02) 8696-1290
www.eblbio.com